

AI in Education

Promise, Potential and Pitfalls



Agenda

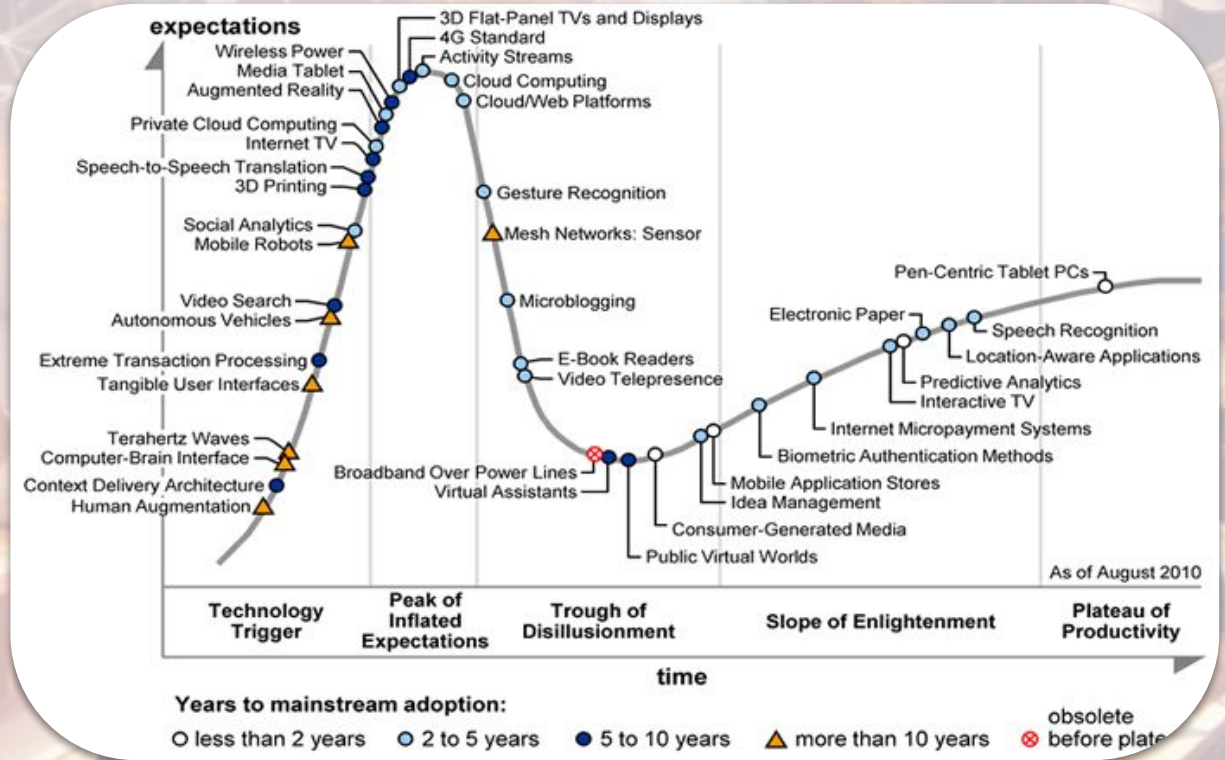
Grounded understanding

Promise, Potential and Pitfalls

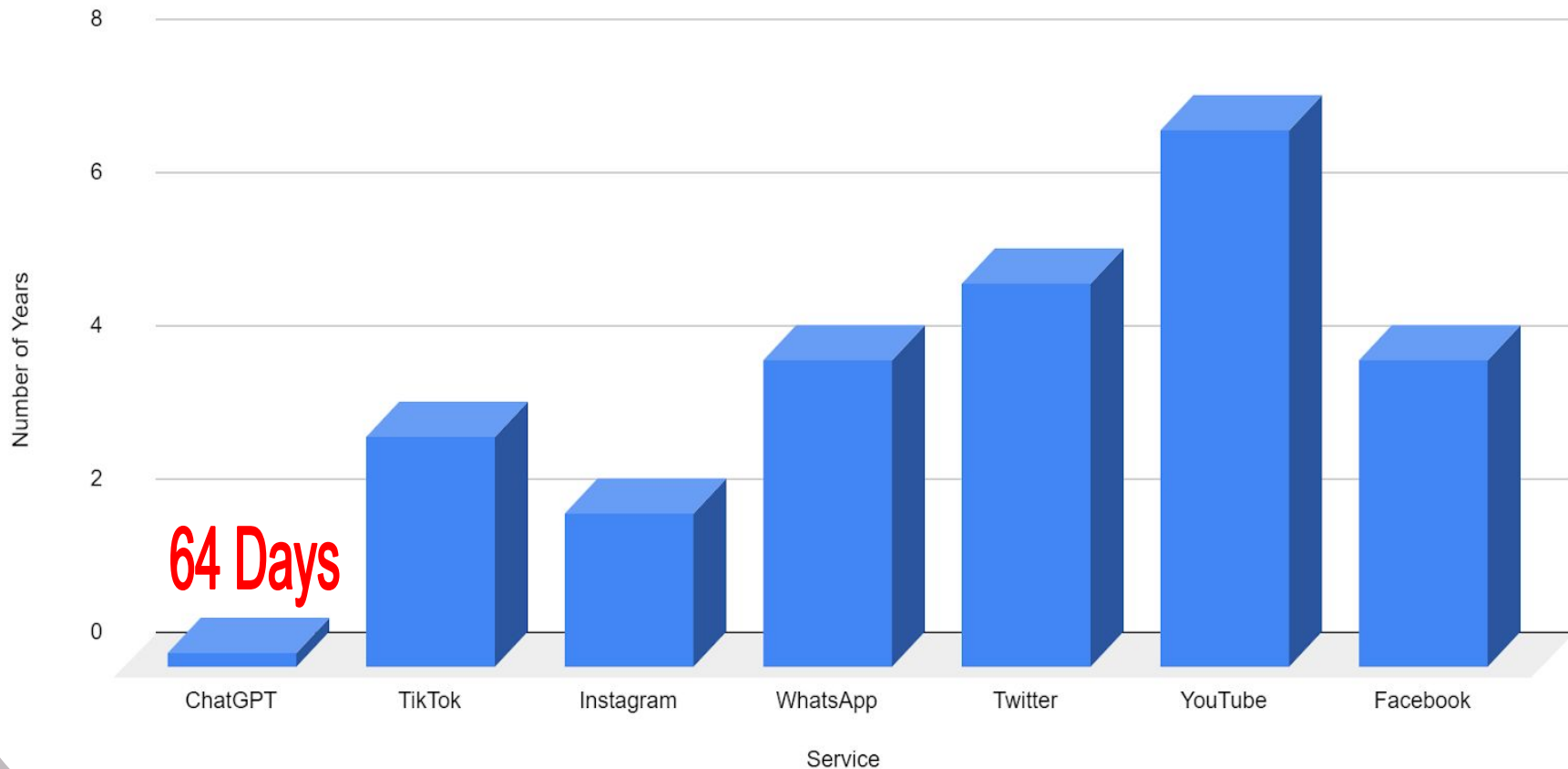
Hands On



Level Setting



Number of Years to Reach 100 Million Users



What is it though...

Feature	Machine Learning	Artificial Intelligence	Large Language Models (LLMs)
Definition	A subset of AI that allows machines to learn from data and improve their performance over time without being explicitly programmed.	A broad field of computer science that seeks to create intelligent agents, which are systems that can reason, learn, and act autonomously.	A type of AI that is trained on a massive amount of text data to generate and understand human language.
Goal	To enable machines to learn from data and make predictions or decisions without being explicitly programmed.	To create intelligent agents that can perform tasks that would normally require human intelligence.	To generate and understand human language at a human-like level.
Methods	A variety of algorithms and techniques, such as supervised learning, unsupervised learning, and reinforcement learning.	A variety of approaches, including machine learning, natural language processing, and computer vision.	LLMs are trained using a variety of deep learning techniques, such as the transformer architecture.
Applications	Machine learning is used in a wide range of applications, including fraud detection, medical diagnosis, product recommendation, and self-driving cars.	Artificial intelligence is used in a variety of applications, including robotics, natural language processing, and machine translation.	LLMs can be used for a variety of tasks, such as generating text, translating languages, writing different kinds of creative content, and answering questions in an informative way.

Current LLM as a Garden Path



Human Brain as a Complex System

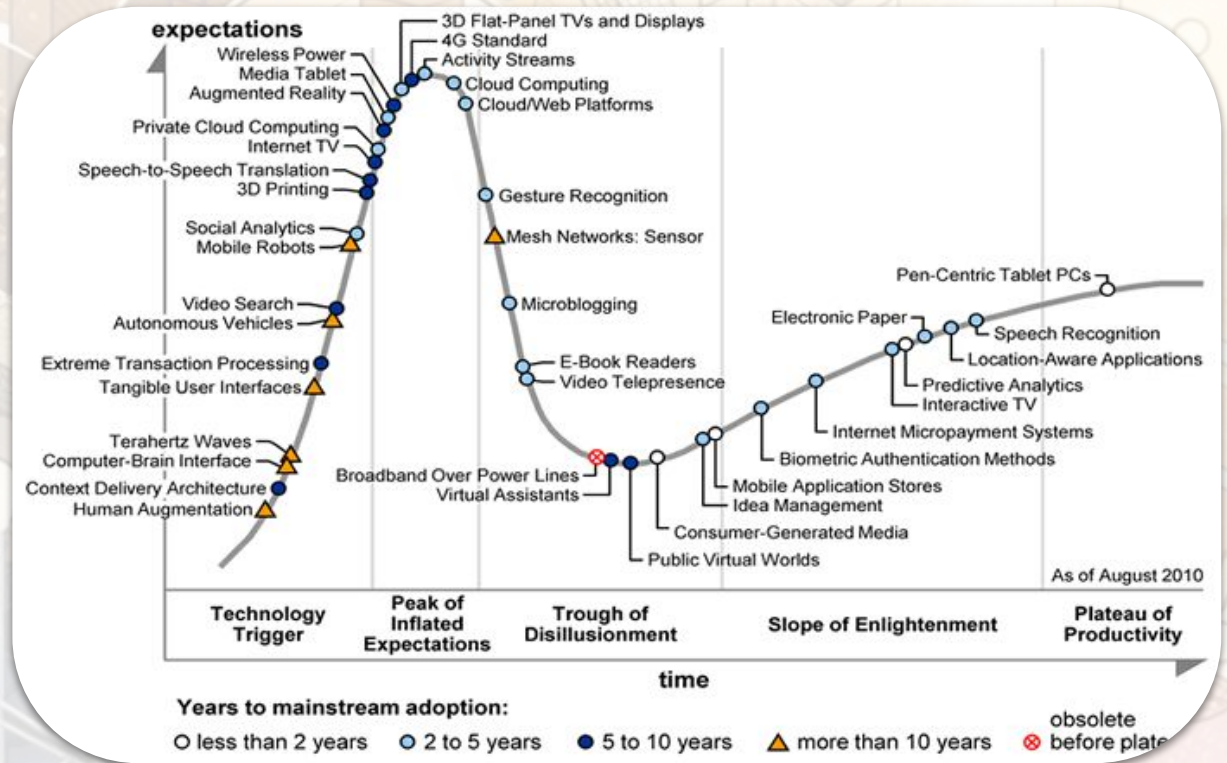


Promise

give good grounds for expecting
(a particular occurrence or situation).
"forthcoming technology promises to
change how we live and work."



Promise



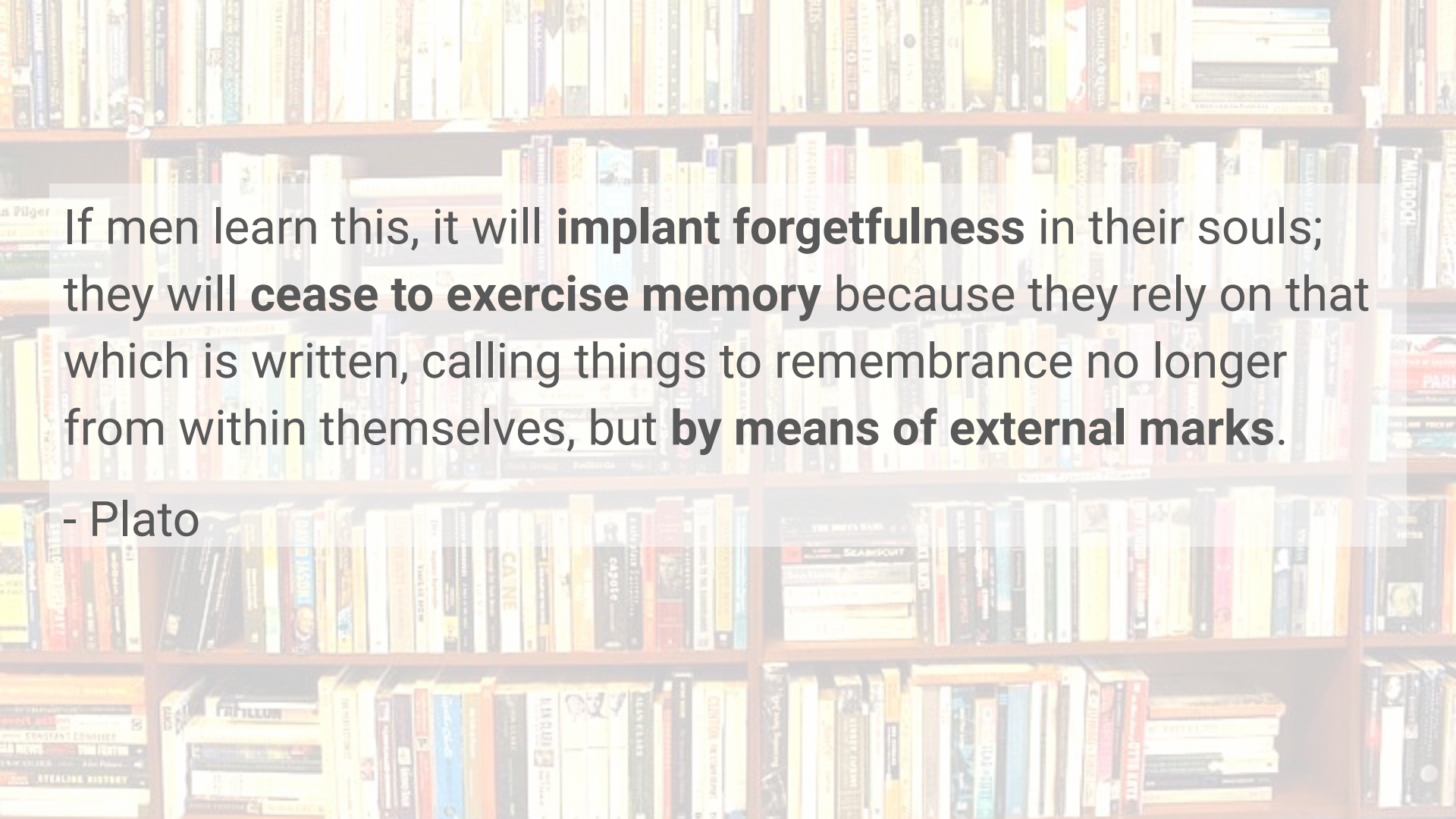
The background is a complex, abstract composition of various geometric shapes, including circles, squares, and lines, in shades of beige, cream, and light blue. The design has a technical or architectural feel, with some elements resembling circuitry or mechanical parts. The overall tone is warm and sophisticated.

Promise

Disruption is inevitable.

Pitfalls



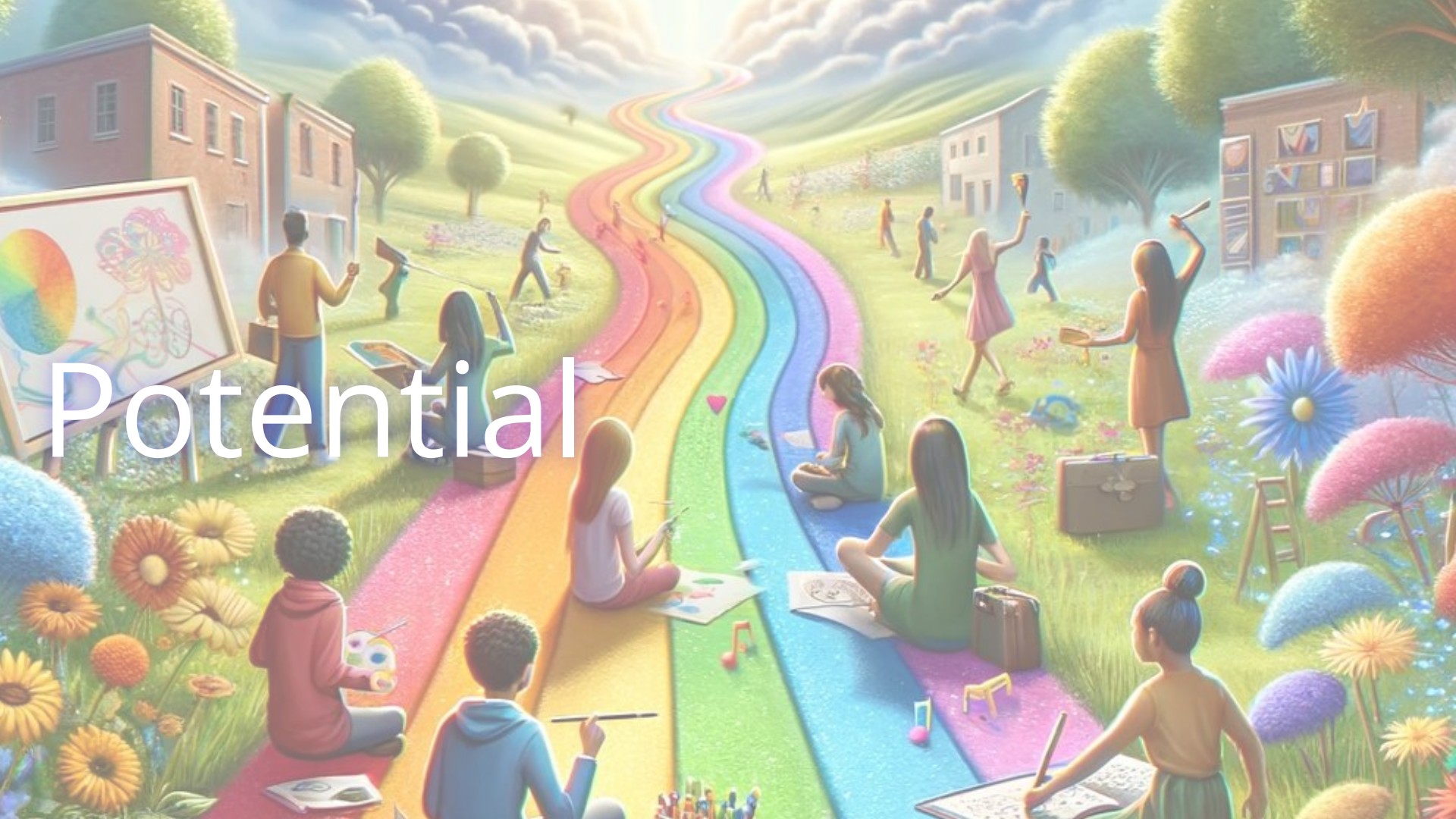


If men learn this, it will **implant forgetfulness** in their souls; they will **cease to exercise memory** because they rely on that which is written, calling things to remembrance no longer from within themselves, but **by means of external marks.**

- Plato







Potential



Teacher Examples

DATA ENHANCED PLC

AI ASSISTED INSTRUCTIONAL DESIGN

PERSONALIZED/DIFFERENTIATED MATERIALS

PACING GUIDES

STUDENT EXAMPLES



Schedule/Time Management

Idea Generation

1st Drafts

Feedback

Strategies (use with teacher guidance)

Tutoring

Jennifer shared a document



Jennifer
has invited you to **edit** the
following document:

Hi Friends!

How do you feel about working the dark magic and helping your lowly English teacher peeps understand our data better? :)

Here are the quizzes and spreadsheets of data from our 2023 Fall Grammar Pre-assessment. Can we throw these spreadsheets into Chatgpt and ask it to share that same report you ran as an example a few weeks ago?

Our PLC team has a pull-out day next Monday, so it would be so awesome to have this information by then (if possible!).

Happiest Wednesday,
Jen



Data of 2023 Grammar PreTest English 9

Teacher Summary