



Association of Metropolitan School Districts

2020 Legislative Preview



Today's Materials: www.amsd.org/preview2020

Wifi: NEM-Conference
Password: RadioShack



Twitter: @AMSDMN hashtag: #amsdlp #mnleg



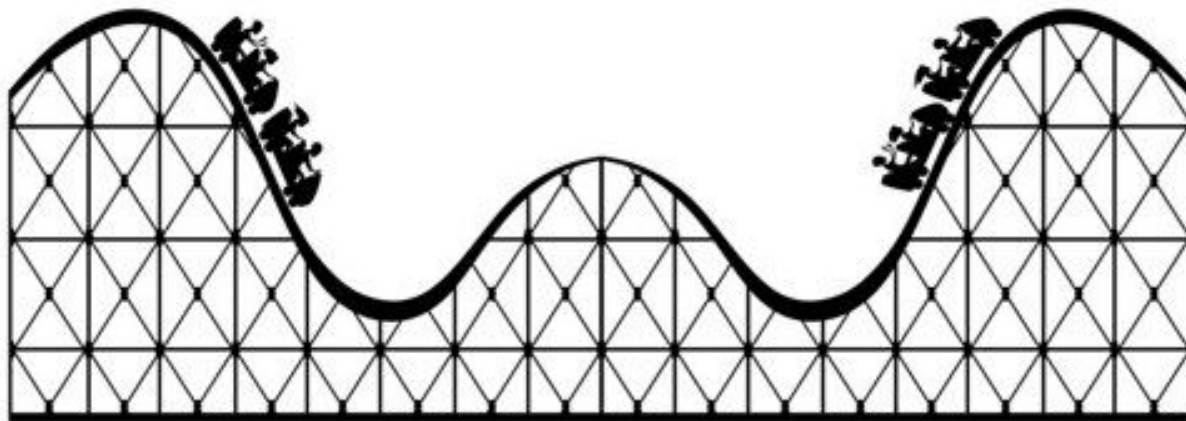
Facebook: www.facebook.com/AMSDMN



2020 Legislative Preview

Riding the Levy Referendum Rollercoaster

Mary Kreger, superintendent, Rosemount-Apple Valley-Eagan Public Schools





2020 Legislative Preview

About District 196

Fourth Largest in Minnesota

- 155,000 residents in 9 south metro communities
- 34 schools and learning centers
- 30,000 students and growing
- 86% of resident students attend District 196 schools

Our Students

- 37% students of color (34% statewide)
- 22% living in poverty (36% statewide)
- 15% special education (16% statewide)
- 7% English Learners (8% statewide)





2020 Legislative Preview

About District 196

Triple-A Philosophy



DISTRICT 196[®]

One District. Infinite Possibilities.





2020 Legislative Preview

Biggest Challenges

- Persistent achievement gaps
- Increasing mental health needs
- Lack of stable, predictable and equitable funding for E-12 education
- Grateful for funding increases in current biennium, but districts are still struggling





2020 Legislative Preview

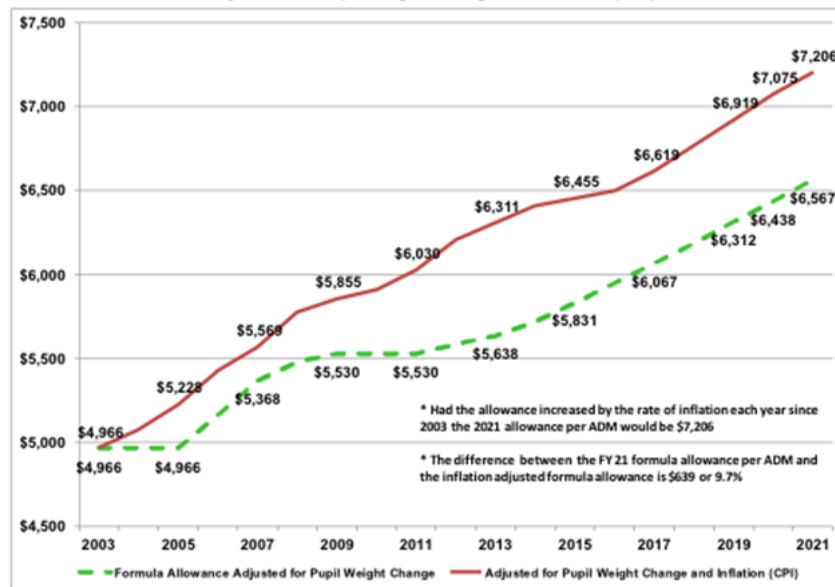
Stable, Predictable and Equitable Funding

General Education Formula

- Single biggest source of E-12 funding
- Has not kept pace with inflation
- Would be \$639 more per pupil
- State budget process does not account for inflation

✓ **AMSD asks: Link the general education formula to inflation**

General Education Formula Allowance, 2003-2021
Adjusted for Pupil Weight Change and Inflation (CPI)



Source: MDE August 2019 Inflation Estimates





2020 Legislative Preview

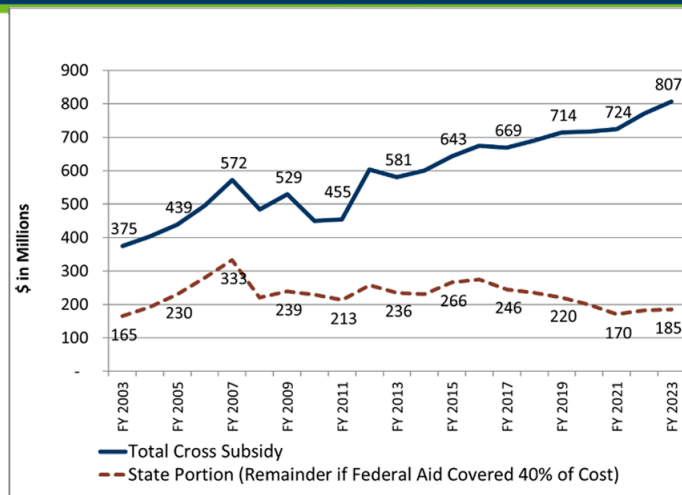
Stable, Predictable and Equitable Funding

SPED and EL Cross-Subsidies

- Services are mandated but not fully funded
- Special education cross-subsidy of \$690 million statewide in FY18
- English Learner cross-subsidy of \$95 million statewide in FY18
- ✓ **AMSD asks: Increase special education and English Learner funding**

SPECIAL EDUCATION CROSS SUBSIDY, FY 2003 – FY 2023

Total and State Portion-(if Fed Funding Covered 40% of Excess Cost)
Current \$ (Millions)



Source: Minnesota Department of Education
FY 2018 Special Education Cross-Subsidies

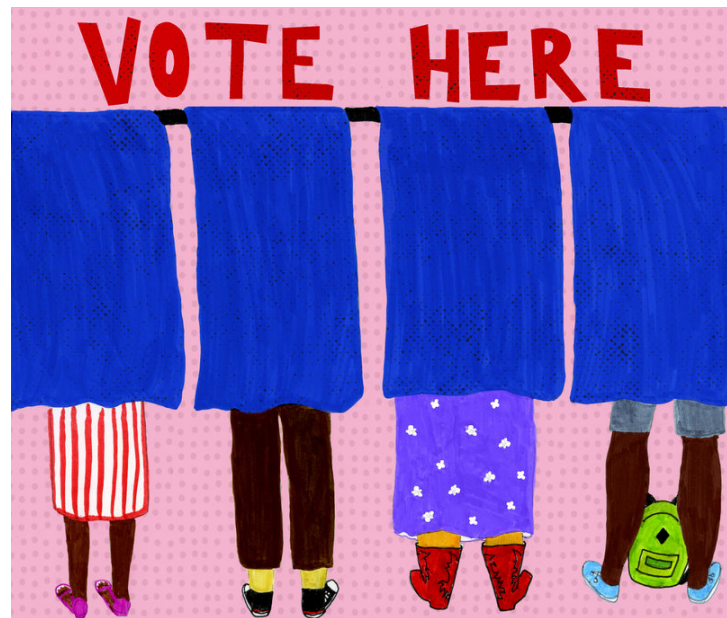




Stable, Predictable and Equitable Funding

The Local Levy Referendum Option

- Established by the Legislature in 1971 as an option for to pay for “extras”
- Currently used to avoid cuts and maintain basic programs and services
- 90% of districts with an average of \$1,000 per pupil and growing every year
- Increasing reliance on levies and lack of equalization aid creating a widening opportunity gap





2020 Legislative Preview

The Levy Referendum Rollercoaster in District 196

2010 – Levy fails

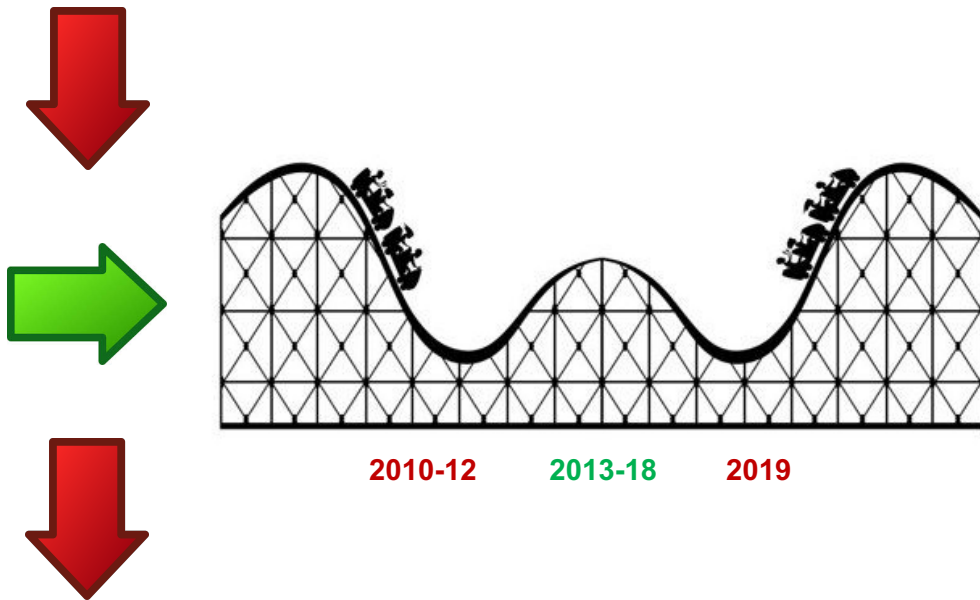
- \$34 million in cuts over 3 years
- More than 100 teachers

2013 – Levy approved

- Stopped further cuts
- No previous cuts restored

2019 – \$25 million shortfall

- \$7 million in cuts for 2019-20
- Board calls for levy referendum question





2019 Levy Successful, But Came With A Cost

A Monumental Effort

- Diverted focus from teaching & learning work
- 34 levy site teams with 231 members and many other volunteers
- Thousands of hours and hundreds of presentations to citizens and community groups
- \$50,000 to run information campaign





Stable, Predictable and Equitable Funding

Taxpayer and Education Equity

- Operating levies are easier to pass in districts with higher property wealth
- The quality of education a child receives should not be dependent on where they live
- ✓ **AMSD asks: Increase equalization to reduce taxpayer & education disparities**
- ✓ **AMSD asks: Allow locally elected school boards to renew existing operation levies**





2020 Legislative Preview

St. Louis Park Public Schools

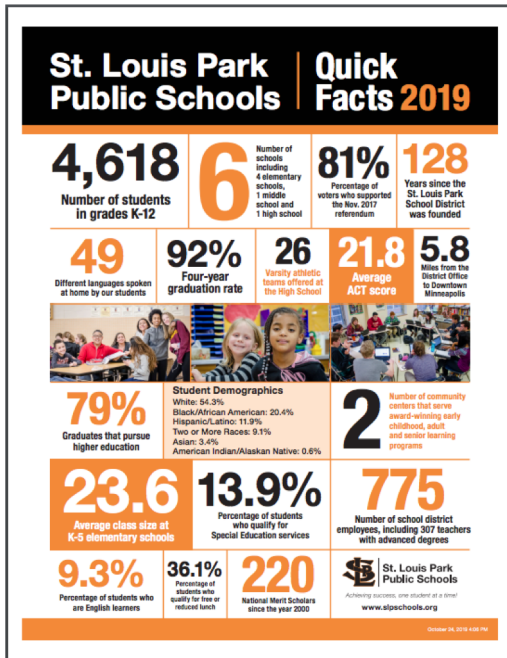
Superintendent Astein Osei





2020 Legislative Preview

St. Louis Park Public Schools



About St. Louis Park Public Schools

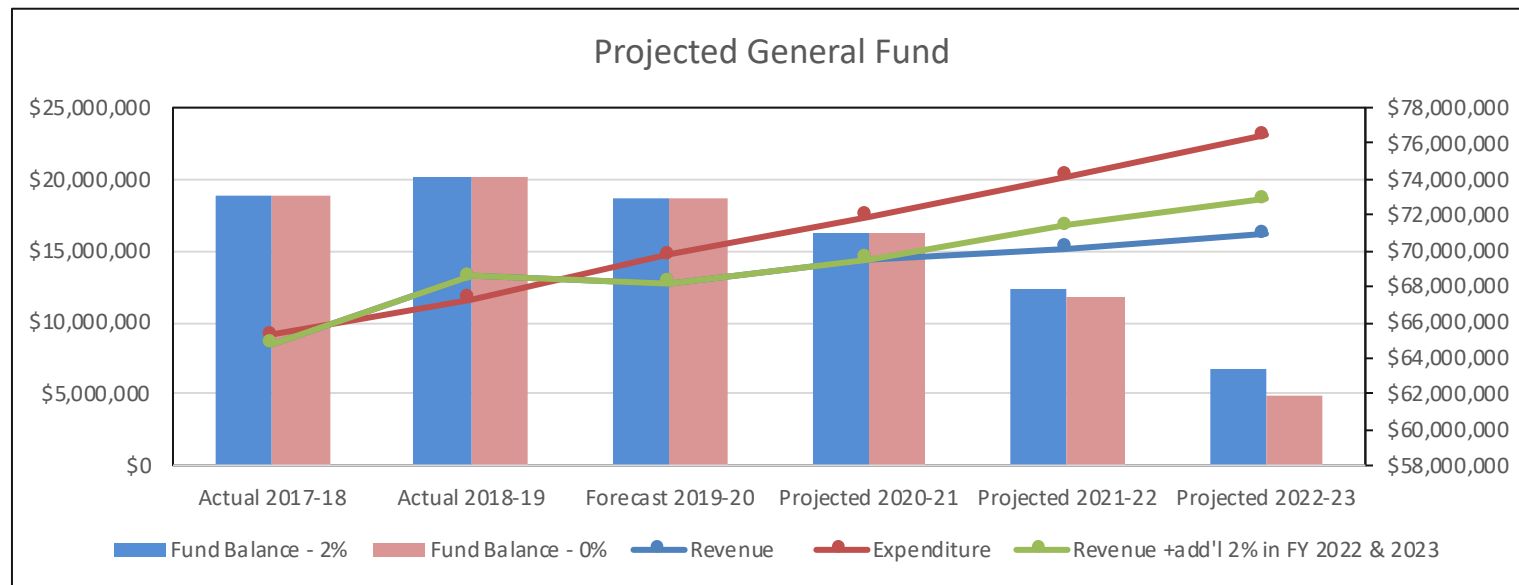
The St. Louis Park Public Schools and the City of St. Louis Park boundaries are nearly identical and both public entities work closely and collaboratively to support residents of all ages. Both the schools and the city are growing. Over the past ten years, the student population has grown from approximately 4,200 students to nearly 4,600 students, with similar growth projected to continue.





2020 Legislative Preview

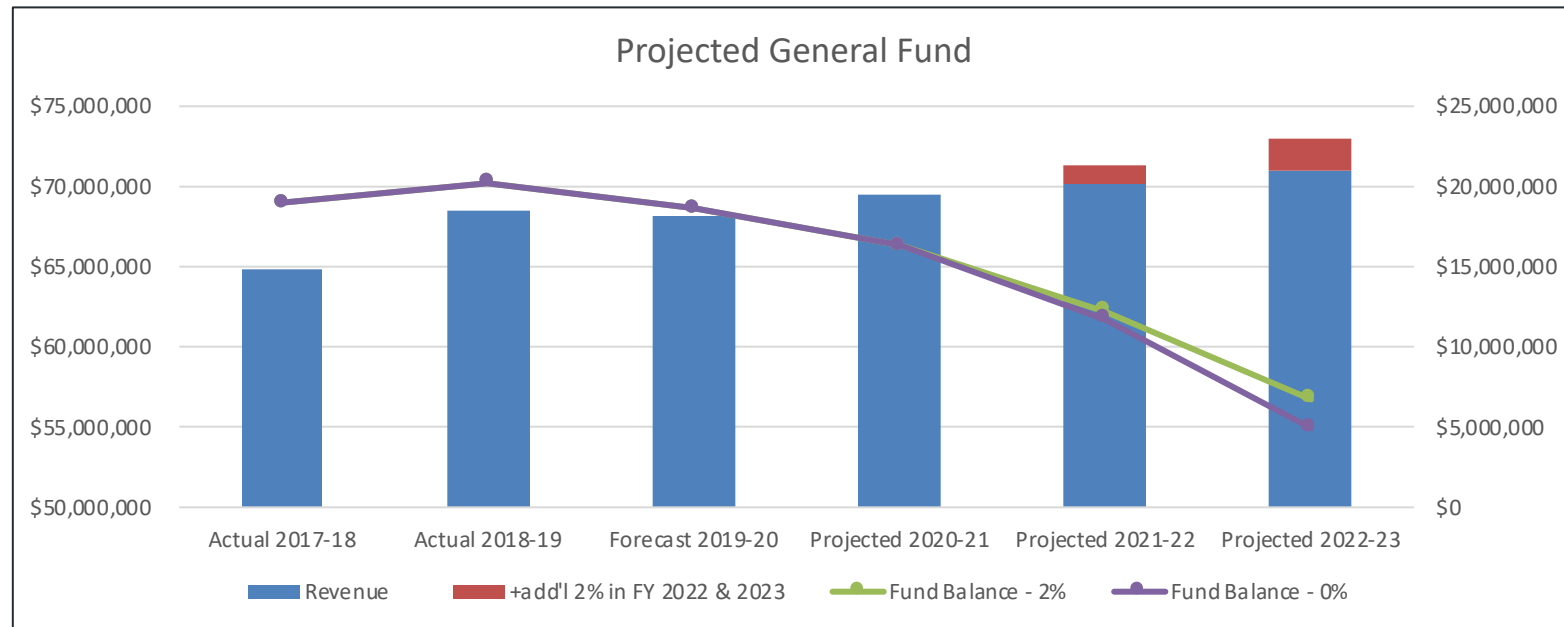
St. Louis Park Public Schools - stabilize education funding





2020 Legislative Preview

St. Louis Park Public Schools - stabilize education funding





2020 Legislative Preview

St. Louis Park Public Schools - ensure safe and modern school facilities

2019 Minnesota Student Survey

TABLE 27A
EMOTIONAL WELL-BEING AND DISTRESS*

ST. LOUIS PARK

| | | Grade | | | |
|--|---|-----------|-------------|-----------|-------------|
| | | 9th | | 11th | |
| | | Male % | Female % | Male % | Female % |
| Over the last two weeks, how often have you been bothered by...? | ...little interest or pleasure in doing things? | | | | |
| | Not at all | 54% | 40% | 42% | 44% |
| | Several days | 29% | 33% | 42% | 33% |
| | More than half the days | 9% | 13% | 10% | 14% |
| | Nearly every day | 7% | 14% | 6% | 9% |
| ...feeling down, depressed or hopeless? | Not at all | 63% | 38% | 51% | 39% |
| | Several days | 19% | 24% | 36% | 37% |
| | More than half the days | 14% | 18% | 8% | 14% |
| | Nearly every day | 3% | 20% | 5% | 11% |
| ...feeling nervous, anxious or on edge? ^A | Not at all | 55% | 30% | 41% | 26% |
| | Several days | 24% | 29% | 36% | 35% |
| | More than half the days | 14% | 20% | 14% | 22% |
| | Nearly every day | 7% | 21% | 9% | 17% |
| ...not being able to stop or control worrying? ^A | Not at all | 65% | 36% | 60% | 43% |
| | Several days | 16% | 29% | 25% | 29% |
| | More than half the days | 12% | 17% | 7% | 14% |
| | Nearly every day | 6% | 18% | 8% | 15% |

Increase the Safe Schools levy and state aid to allow school districts and intermediate school districts to hire additional support staff to address the mental health needs of our students; and

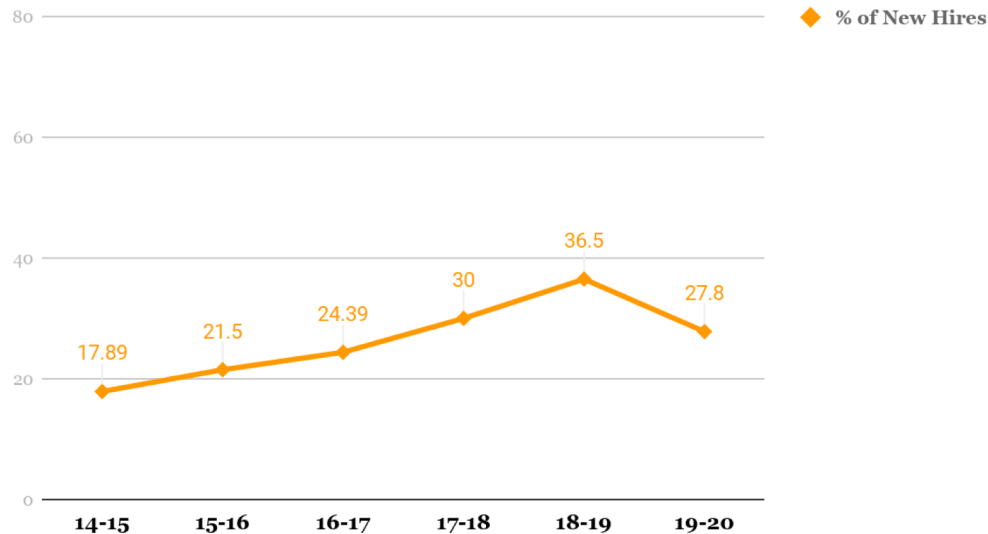




2020 Legislative Preview

St. Louis Park Public Schools - increase and diversify the educator workforce

New Hires - Staff of Color



| % Staff of Color | | % Teachers of Color | |
|------------------|-----|---------------------|-----|
| 2014-15 | 11% | 2014-15 | 7% |
| 2015-16 | 13% | 2015-16 | 8% |
| 2017-18 | 15% | 2017-18 | 9% |
| 2018-19 | 16% | 2018-19 | 11% |
| 2019-20 | 17% | 2019-20 | 11% |



St. Louis Park Public Schools - reduce mandates and enhance local control



- Minnesota Statutes 2018, section 121A.41, is amended by adding a subdivision to read: Subd. 12. Nonexclusionary disciplinary policies and practices; alternatives to pupil removal and dismissal.
- A bill for an act relating to education; requiring paid orientation for paraprofessionals; appropriating money for paraprofessional training; amending Minnesota Statutes 2018, section 125A.08.



2020 Legislative Preview

Intermediate District 287

Superintendent Sandy Lewandowski





2020 Legislative Preview

Minnesota's changing student population

- **1 in 2** have experienced childhood trauma

*U.S. Department of Health and Human Services,
National Survey on Children's Health, 2017-2018*

- **1 in 4** report having long-term mental health, behavioral or emotional problems

Minnesota Department of Health, Minnesota Student Survey, 2019

- These students are nearly **5X** as likely as others to seriously **consider suicide**

Minnesota Department of Health, Minnesota Student Survey, 2019





2020 Legislative Preview

Public schools are the de facto mental health system for the state

The responsibility to provide and pay for children's safety and mental health needs has shifted from state and county-based providers to public schools.

Far beyond education

Schools are responsible for...

- Security
- School resource officers
- Physical restraints
- Medications
- Psychiatry
- Psychology
- Counseling
- Chemical dependency
- Crisis interventions
- Mental health, trauma, and behavior supports



2020 Legislative Preview

The Toll on Educators:

- Physical injuries
- Mental Health
- Secondary trauma
- Compassion fatigue
- Relationships and family challenges



Educators Need:

- Professional development
- Trauma training
- Safety and de-escalation training
- Personal wellbeing supports





2020 Legislative Preview

**Trauma is treatable.
Schools must be adaptive.**



A blended education and innovative mental health model

- Trauma-informed practices
- Evidence-based instruction
- Educator well-being
- Family agency
- Investment

Mental health treatment programs in schools have found a six-fold return on investment in reduced costs to government and taxpayer-funded programs.



2020 Legislative Preview



Video: Why Minnesota Needs Therapeutic Teaching

<https://www.youtube.com/watch?v=8he5xFAdETc&feature=youtu.be>





2020 Legislative Preview

Fully Fund mental health in schools.

The students who have experienced trauma and the educators who work with them deserve no less.





2020 Legislative Preview

Education Commissioner Mary Cathryn Ricker





2020 Legislative Preview

Legislative Panel

- Rep. Cheryl Youakim (DFL-Hopkins)
- Rep. Sondra Erickson (R-Princeton)
- Sen. Carla Nelson (R-Rochester)
- Sen. Chuck Wiger (DFL-Maplewood)



